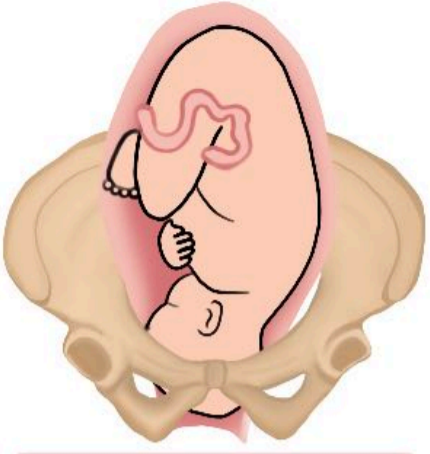
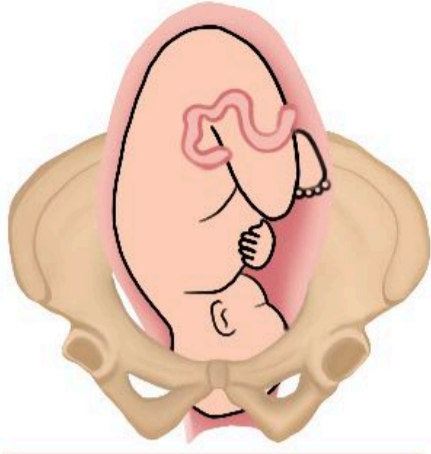


# FETAL PRESENTATIONS

## CEPHALIC PRESENTATIONS



LEFT OCCIPITAL ANTERIOR (LOA)



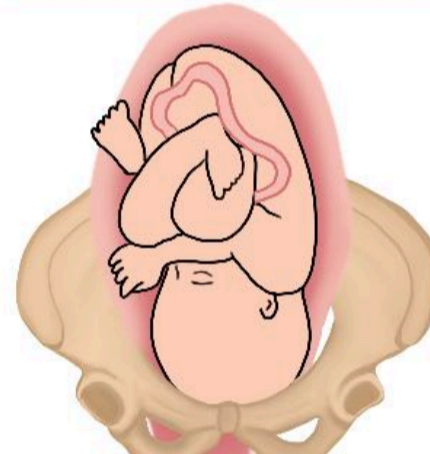
RIGHT OCCIPITAL ANTERIOR (ROA)



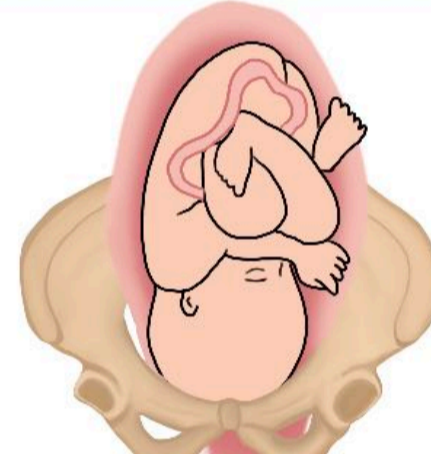
LEFT OCCIPITAL TRANSVERSE (LOT)



RIGHT OCCIPITAL TRANSVERSE (ROT)



LEFT OCCIPITAL POSTERIOR (LOP)



RIGHT OCCIPITAL POSTERIOR (ROP)

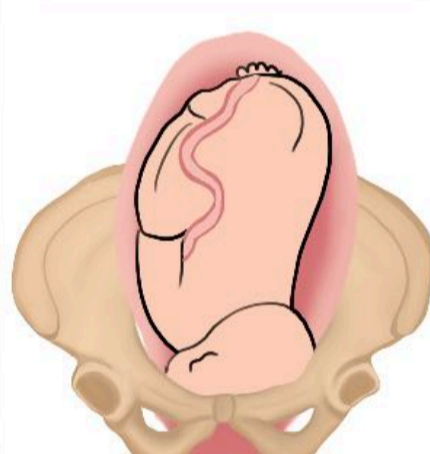
## FACE PRESENTATIONS



LEFT MENTUM ANTERIOR (LMA)

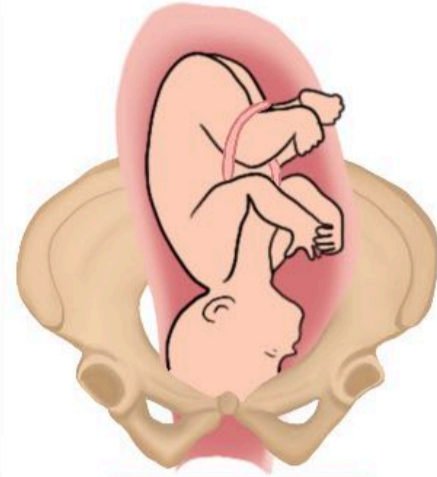


RIGHT MENTUM ANTERIOR (RMA)

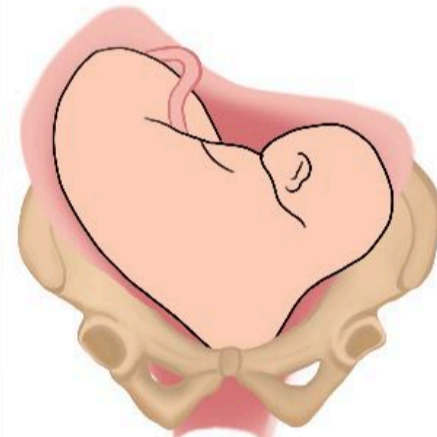


RIGHT MENTUM POSTERIOR (RMP)

## OTHER PRESENTATIONS



BROW PRESENTATION



SHOULDER PRESENTATION  
(TRANSVERSE LIE)

## BREECH PRESENTATIONS



LEFT SACRUM ANTERIOR



LEFT SACRUM POSTERIOR



COMPLETE BREECH



INCOMPLETE BREECH



FRANK BREECH

